

# DETENTION HARDWARE

Tough • Quality Built



## DPS 6200

► A high security mortised door position switch for door frame installation. Used in access-sensitive areas for swinging doors and windows.



## MOGUL CYLINDER

► This high security 6 pin tumbler mogul cylinder provides more key combinations than standard five tumbler models. This feature, combined with the sheer physical size of the Airteq cylinder, provides the user with the highest security uni-axial mogul cylinder available.



## DOOR STOP 650

► This door stop is designed for use with door hardware with up to a 2 1/4" projection. The 2" diameter, black silicone rubber bumper is mounted on a 5/8" X 2 1/2" steel shank for permanent attachment in grout filled masonry block or concrete. It can be wall or floor mounted.  
► **651 Door Stop** - (2" dia, 1 1/2" tall also available)



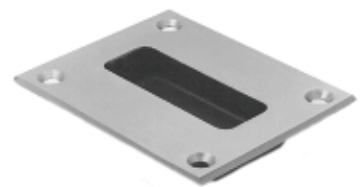
## PULL HANDLE 612

► Cast in bronze with a clear coated satin finish of approximately US32D (US4 available). Overall length is 8 3/4".



## DOOR KNOB 613

► Machined from solid brass bar with a clear coated US4 finish (US32D available). The diameter at the base is 3 1/4" and the projection is 2 1/4".



## FLUSH PULL 614

► Cast in bronze with a clear coated satin finish of approximately US32D (US4 available). The size of the face plate is 4" X 5" X 1/8".



## INSTITUTIONAL MORTISE HINGE WITH SECURITY STUD 604 FMCS

► This hinge is made from investment cast 304 stainless steel. Hinge is 4 1/2" X 4 1/2" X 3/16" thick, with hospital tip and maintenance-free bearing assemblies.

### AVAILABLE OPTIONS:

- **604FMC** - without security stud
- **604FMCS-CE** - with concealed through wire for electric applications



## PRISON HINGE 605

► This heavy duty surface mounted hinge is designed for use with the heaviest of doors. Hinge is 5" X 6" X 1/2" thick cold rolled steel. This 800 lb. capacity hinge features self-lubricating radial and thrust bearings for ease of operation in high use areas and a hardened alloy steel pin for added security. Available for full surface, full mortise, half mortise, and gap applications.



## PRISON HINGE 603

► This hinge can be used for many prison applications, including access panels and weapons lockers. Hinge is 3" X 4" X .210" thick steel with a fully welded pin.



## INMATE PUSHBUTTON 6300

► This heavy duty switch assembly is designed specifically for the detention environment. When enabled from a control station, it will allow inmate operation of cell door locks or performs as an inmate call button. This momentary switch assembly can be used with either 24VDC or 125VAC applications.



## FOOD PASS HINGE WITH STOP 603FP

► This surface mounted hinge is used on food pass doors. Hinge is provided with a stop that restricts hinge rotation to 90 degrees, allowing the food pass door to act as a shelf. Hinge is 3" X 4" X .210" thick steel, with a fully welded pin.

For complete information on any  
Airteq product,  
call 1-800-633-1968 or visit  
[airteqsystems.com](http://airteqsystems.com)